

This is a sample manual



Goto:

dubmanuals.com

to download the complete manual

Note, the Table of Contents links
may not function in this sample

Contents

0.1 Alphabetical Index	2
1.1 Maintenance	33
1.2 USA Warranty	63
2.1 Safety First	101
3.1 Controls and Operating Equipment	182
3.2 Tips and Advice	286
3.3 Technical Data	382
3.4 Sound System Monsoon Premium	393
3.4 Sound System Premium CD Monsoon	427



Volkswagen

Owner's Manual



**0.1 2004 New Beetle
Convertible**
Alphabetical Index



1.1 2004 Volkswagen
Maintenance

TABLE OF CONTENTS

Warranty Voucher / Vehicle Identification Label	previous pages
--	----------------

Service Information

Dealer Service	3
Do-It-Yourself Service	3
Emission Control Maintenance	4
Why Service?	4

When do I bring my car in for service?

1.8L Turbo or 2.8L V6 Gasoline Engines

If your car has a 1.8L Turbo or 2.8L V6 Gasoline engine, then this is your Service Schedule	5
--	---

2.0L, 2.8L VR 6 , 4.0 L W8, 3.2L VR6 and 4.2L V8 Gasoline Engines or 1.9L TDI Diesel Engines

If your car has a 2.0L, 2.8L VR6, 4.0L W8, 3.2L VR6 and 4.2L V8 Gasoline engine or a 1.9L TDI Diesel engine, then this is your Service Schedule	6
--	---

**If you are not sure when to bring your car in for service, ask
your authorized Volkswagen Service Advisor.**

Service Schedule

Delivery Inspection	7
Service Schedule	7 - 24

Brake Fluid Replacement Record

Brake Fluid Replacement Record	25
--------------------------------------	----



**1.2 2004 Passat, Golf,
Jetta, New Beetle,
New Beetle Convertible**
USA Warranty



Table of contents

Limited New Vehicle Warranty	2	California Emissions Warranties	20
What is covered	2	California law requires us to provide you with the following Emissions Warranty Statement	20
What is not covered	4	CALIFORNIA EMISSION CONTROL WARRANTY STATEMENT	20
Limited Powertrain Warranty ..	7	Emissions Performance Warranty	24
What is covered	7	Customer CARE	28
What is not covered	8	Dealer assistance	28
Limited Warranty Against Corrosion Perforation	10	When to notify the manufacturer	28
What is covered	10	Repairs not covered by warranty	29
What is not covered	11	BBB AUTO LINE	30
24 Hour Roadside Assistance ..	13	BBB AUTO LINE dispute settlement services	30
The Volkswagen 24 Hour Roadside Assistance program	13	Service Publications	31
Federal Emissions Warranties ..	14	Product service publications	31
General	14	Tire Manufacturers	32
Emissions Control System Warranty ..	14	List of tire manufacturers for new Volkswagen vehicles	32
Emissions Performance Warranty	16		
Additional Information	19		



2.1 2004 New Beetle Convertible

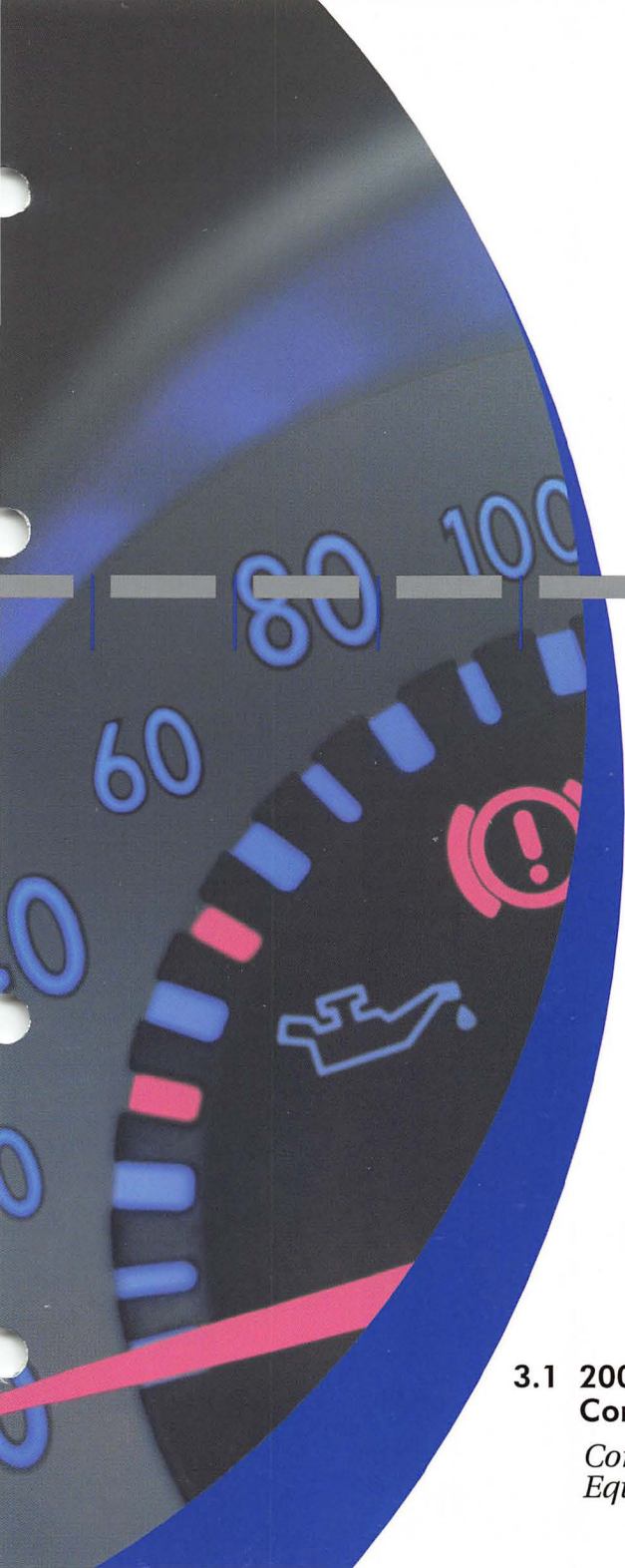
*Safety first
Important Information
about the*

- Safety belts
- Airbags
- Seats
- Child safety

US Models only

TABLE OF CONTENTS

Welcome	2
Safety first	2
Safety belts	3
Safety belt extender	13
Airbag system	16
Automatic Rollover Support System®	46
Child safety	49
Head restraints	70
Front seats	71

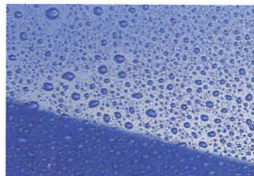


3.1 2004 New Beetle Convertible

*Controls and Operating
Equipment*

TABLE OF CONTENTS

INSTRUMENT PANEL AND CONTROLS		SEATS AND STORAGE	
General illustration	3	Head restraints	58
Warning and indicator lights	6	Front seats	59
Instrument cluster	8	Adjustable steering column	62
Warning / Indicator lights	10	Armrest	63
OPENING AND CLOSING		Pedals	64
Keys	20	Rear seat	65
Remote control	22	Luggage compartment	66
Anti-theft alarm system	25	Ashtrays*	68
Doors, Power locks	26	Cup holders	69
Rear lid	29	Cigarette lighter*, Socket*	70
Power windows*	31	Glove compartment	71
Soft top	35	Ski sack*	71
Windstop*	41	HEATING, VENTILATION AND AIR CONDITIONING	
CLEAR VISION		Air conditioning	73
Switches	45	ON THE ROAD	
Turn signals / High beam lever	48	5-speed manual transmission	79
Wiper and washer system	49	6-speed automatic transmission with Tiptronic*	80
Wiper blades	51	Parking brake lever	86
Interior light	52	Ignition switch	87
Vase	53	Power steering	88
Mirrors	54	Starting procedures	89
Sun visors	56	Stopping engine	90
Digital clock	57	Engine compartment	91
Temperature sensor	57	Cruise control*	92



3.2 2004 New Beetle Convertible

*Tips and Advice
- operating your vehicle
the right way*

TABLE OF CONTENTS

FILLING YOUR TANK

Fuel tank	2
Fuel supply	4

OPTIMAL TECHNOLOGY

Braking	6
Electronic differential lock (EDL)* ..	8
Anti-Slip Regulation (ASR)*	9
Electronic Stabilization Program (ESP)*	10

DRIVING AND PROTECTING OUR ENVIRONMENT

The first 1,000 miles (1 500 km) - and afterwards	11
Operate your vehicle safely	12
Difficult operating conditions	13
Operate your vehicle economically and minimize pollution	14
Warranty coverages	17
Trailer towing*	18

CARE AND CLEANING

Cleaning and protection	22
Care of exterior	23
Care of interior	27
Maintenance	31

CHECKING AND FILLING

Engine hood	34
Engine compartment	35
Engine oil	37

Engine cooling system	41
Brake fluid	44
Battery	46
Solar panel*	51
Windshield washer container	52

KEEPING YOUR VEHICLE IN GOOD WORKING CONDITION

Additional accessories, Modifications and Parts replacement	53
Installing / replacing a radio	54
Mobile telephones and CB radios	54

WHAT DO I DO NOW?

Service kit*	55
Jack and tool kit, spare wheel	56
Tires / Wheels	61
Changing a wheel	71
Anti-theft wheel bolts	76
Fuses	77
Replacing bulbs	78
Emergency starting	78
Emergency towing with commercial tow truck	81
Lifting vehicle	82
Reporting safety defects	84
Outside the U.S.A. or Canada	85
VOLKSWAGEN Service Information	85



**3.3 2004 New Beetle
Convertible**
Technical Data

TABLE OF CONTENTS

General Information	2
Vehicle identification	3
115 hp engine	4
150 hp engine	6



**3.4 2004 New Beetle
Convertible**
*Sound System
Monsoon / Premium*

CONTENTS

Overview	next pages
Important Notes	4
Radio Mode	5
Cassette Mode	12
CD Mode*	16
CD Changer*	20
Anti-Theft Coding	24
Warranty, Replacement, Antenna Care ...	26
Technical Description	27



The "Radio Card" must be detached and kept in a safe place - under no circumstances in the vehicle. Should the "Radio Card" with the code number be lost, please contact a Volkswagen dealer.



Radio Card

Radio

Monsoon/Premium

Serial Number

Code Number



Place the self-adhesive labels for the serial number and code number in the appropriate boxes.



3.4 Sound System
Monsoon / Premium

CONTENTS

Overview	next pages
Important Notes	4
Radio Mode	5
CD player operation	19
MP3 player operation	24
CD Changer*	32
Anti-Theft Coding	37
Warranty, Replacement, Antenna Care	39
Technical Description	40


The “Radio Card” must be detached and kept in a safe place - under no circumstances in the vehicle. Should the “Radio Card” with the code number be lost, please contact a Volkswagen dealer.



Radio

Serial
Number

Code
Number

Radio Card 
<i>Monsoon/Premium</i>

Place the self-adhesive labels for the serial number and code number in the appropriate boxes.